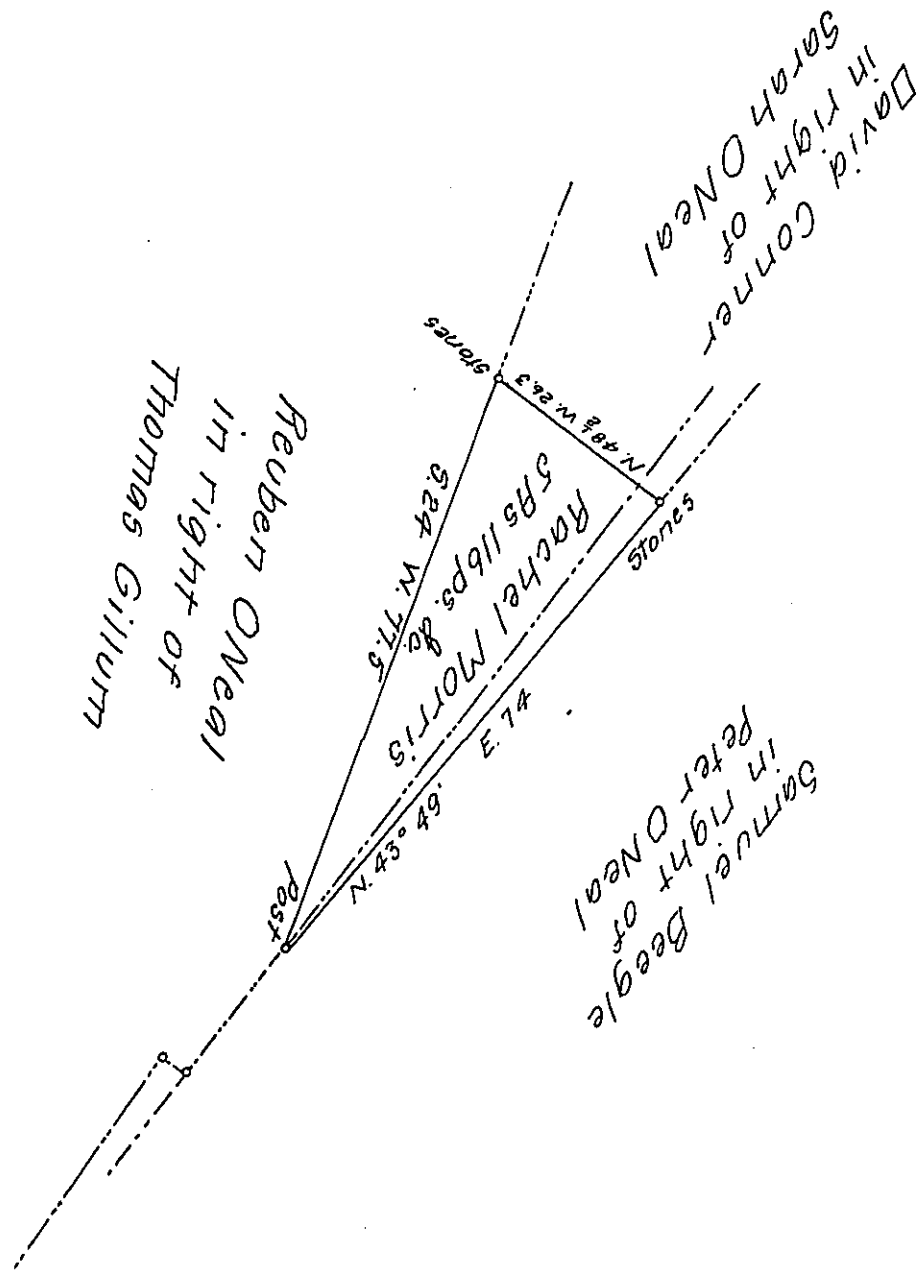


FORM NO 1.



A Draught of a tract of land situated in the Township of Monroe and the County of Bedford, containing Five acres, 116 perches and allowance of six per cent. for roads, etc. Surveyed the 15th day of October ~~1891~~¹⁹⁰¹, in pursuance of a warrant granted to Rachel Morris Δ for 10 acres dated the 20th day of October 1881.

Lewis Pittman

County Surveyor

To James W. Latta, Esq.,

Secretary of Internal Affairs

IN TESTIMONY that the above is a copy of the original remaining on file in the Department of Internal Affairs of Pennsylvania, made conformably to an Act of Assembly approved the 16th day of February, 1833, I have hereunto set my Hand and caused the Seal of said Department to be affixed at Harrisburg, this fourth day of September 1907

Henry Howck

Secretary of Internal Affairs.